

# EdgeManage by Emmet Gray

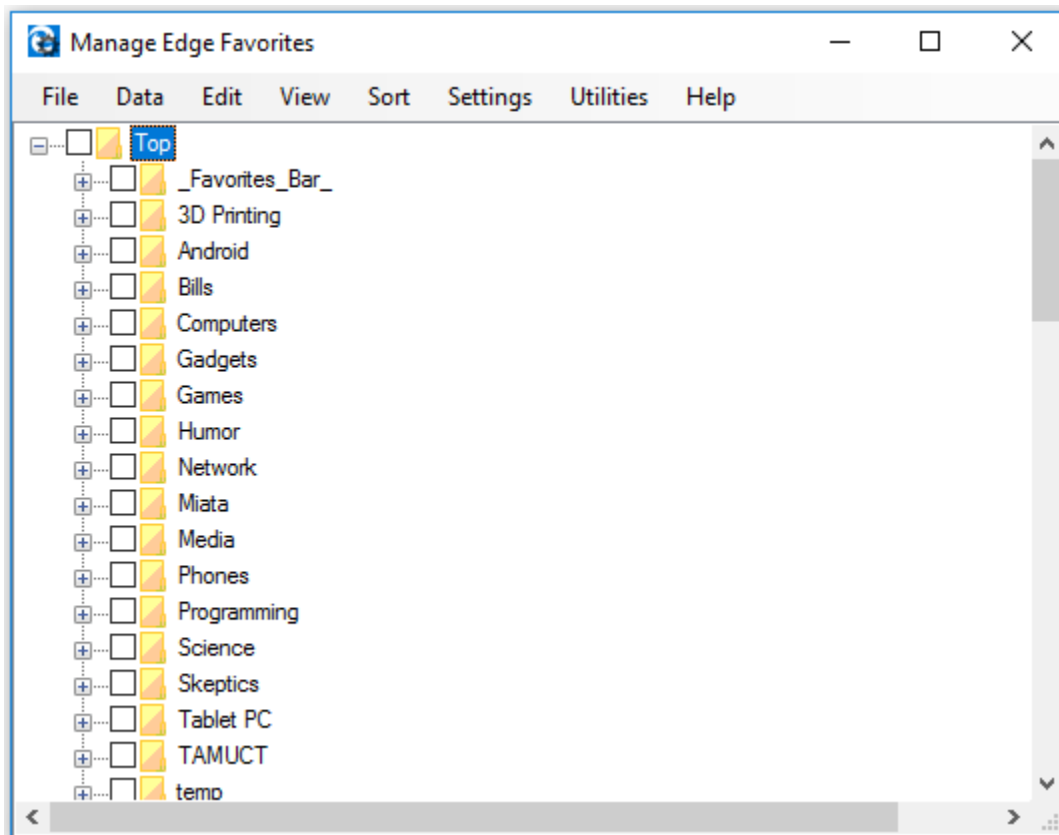
<http://www.emmet-gray.com/Articles/EdgeManage.html>

## • User's Guide

When you first launch the application, it will automatically load all of the favorites from the Edge database into the application's local cache. From there, you can make changes to the locally cached version of the data. After you've got things the way you want, then you can then save the changes back to the Edge database. *Note: Nothing is saved to the Edge database until you click on "Save Changes"*

***Note: You should close the Edge browser before running this application.***

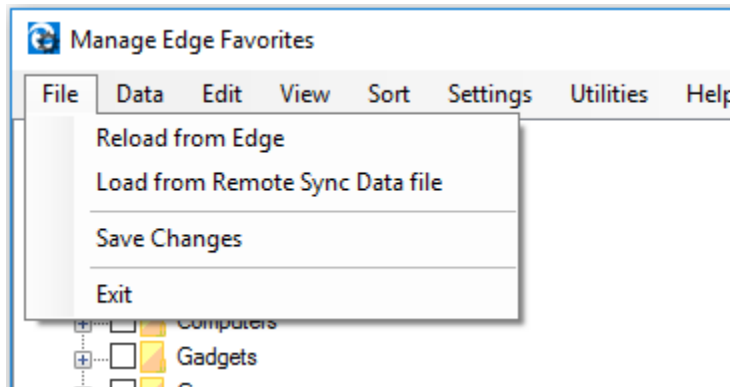
The opening screen for the application looks something like this:



It should show all of the existing favorites and folders exactly as they appear in Edge. You can then just "drag and drop" the items to reorganize your folders and favorites. You can also use the application's menus to insert, rename, edit, delete, import, export, sort, etc.

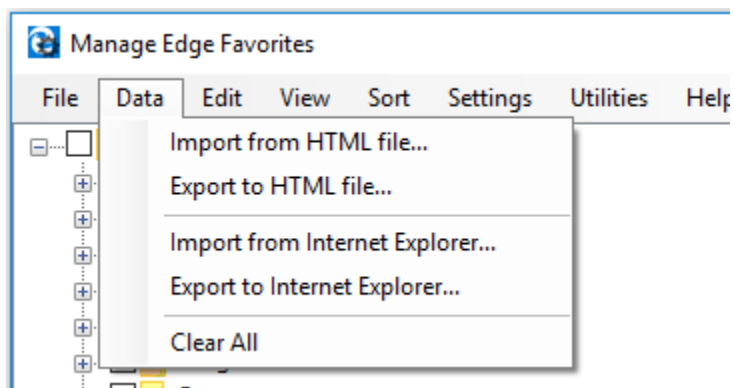
To move or delete multiple items in one action, just put checkmarks by the items you want to include in the action.

## File menu



- Reload from Edge - This will abandon any changes that you've made to the local cache and reload the favorites from the Edge browser
- Load from Remote Sync Data file - This will allow you to load the data from an XML-based text file that is used by the EdgeSync application
- Save Changes - This will save your changes to the Edge database. Using the default setting, this would also make a backup of the database prior to saving (just in case...)
- Exit - Exit the application. If you have made any changes, you will be prompted if you would like to save them

## Data menu

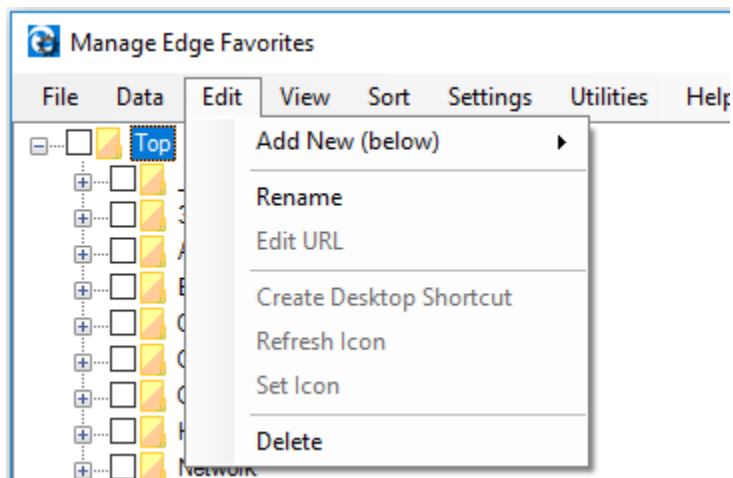


- Import from HTML file - This will import favorites that have been saved into an HTML-based "bookmarks.html" file. Note: Most browsers can produce this type of file
- Export to HTML file - This will export your favorites to an HTML-based "bookmarks.html" file. Use this feature to later import favorites into Edge (or another browser). You can also use this to make an archive of your favorites (perhaps to a USB flash drive, etc)
- Import from Internet Explorer - This will import favorites from Internet Explorer. You can import from any folder location, but the default is the user's Favorites folder
- Export to Internet Explorer - This will export your favorites to Internet Explorer. You can export to any folder location, but the default is the user's Favorites folder
- Clear All - This will completely wipe out all folders/favorites in the local cache. Remember, this just effects the local cache and nothing is stored to the Edge database until you click on "Save Changes"

*Note: By default, import operations will merge with the existing list of favorites and will overwrite matching items. You can control this behavior with the Settings->Merge Imports menu item to instead have imported favorites placed in an auto-generated folder*

You can use the Import HTML/Export HTML features to effectively copy all favorites from one PC to another. This would typically require you to export to a backup file, copy the backup file to the other PC, and then import from the backup file.

## Edit menu

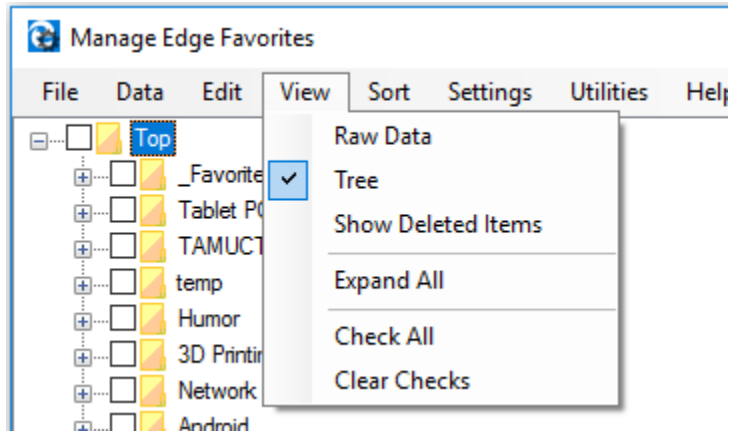


- Add New - This will allow you to manually insert either a folder or a favorite immediately below the item that is currently selected. Remember, you can move the item after it has been added.
- Rename - This will allow you to rename either a folder or a favorite
- Edit URL - This will allow you to change the URL (the actual web address) for the selected favorite
- Create Desktop Shortcut - This will create an Internet shortcut on the desktop for the selected favorite
- Refresh Icon - This will attempt to get a new favorite icon for this favorite
- Set Icon - Set the icon for a favorite based upon a graphic file on your PC. Graphics will be converted and resized appropriately.
- Delete - This will delete the selected folder or favorite. Note: If the selected item is a folder and it's not empty, you will be prompted to confirm the deletion. You can also use the delete key on the keyboard to quickly delete a favorite.
- Undelete - Used with the "View->Show Deleted Items" option to resurrect previously deleted items. Note: When undeleting, make sure that you also undelete all parent folders

In addition to these menu items, you may also use a "right-click" context menu to accomplish the same features

The ability to edit the URL allows Edge to support bookmarklets (a javascript applet inside a URL)

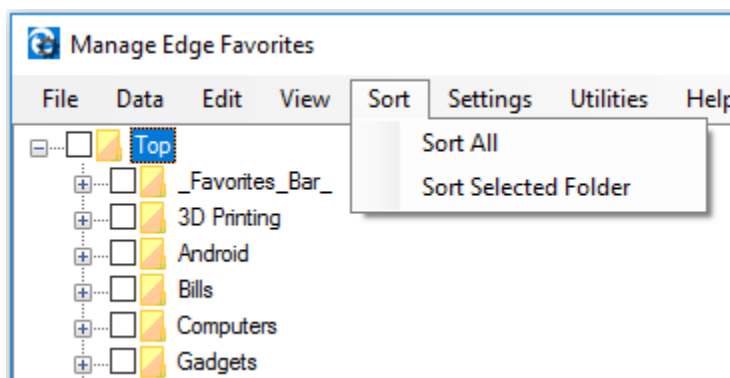
## View menu



- Raw Data - Change the main view to be able to see the raw data (geeks only)
- Tree View - The default view of the folders/favorites as a tree
- Show Deleted Items - Show items in the tree that have been previously deleted. Deleted items appear in the tree with a "strikeout" font and a bright yellow background
- Expand All - Expands all of the folders in the tree to show all of the favorites. Note: There is no "undo" for this feature... you'd have to manually "collapse" each folder in the tree to get the view back to the way it was.
- Check All - Set all of the checkmarks at this level (used for multi-selection)
- Clear Checks - Clear all of the checkmarks everywhere (used for multi-selection)

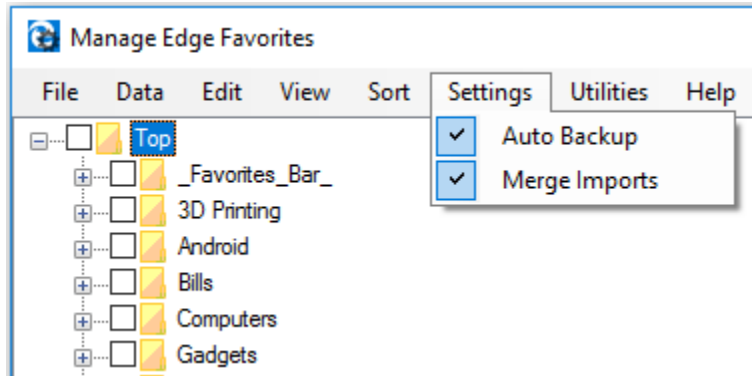
Multiple selection (via the checkboxes) is only supported with the Move, Delete, and Undelete functions.

## Sort menu



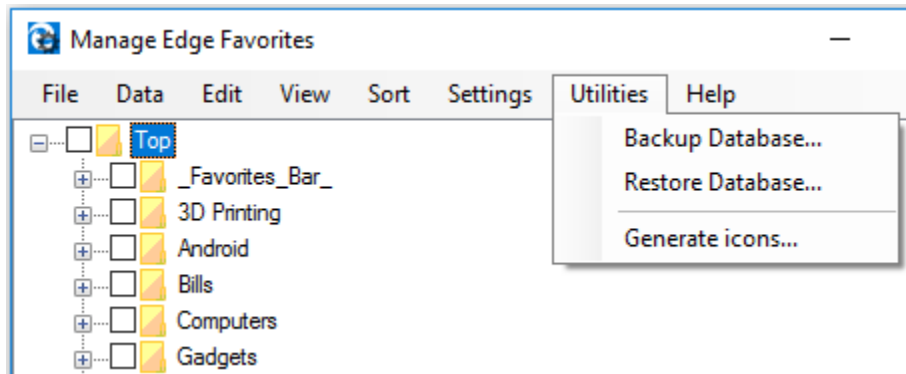
- Sort All - Sort all of the folders/favorites. Note: There is no "undo" to return to the previous order
- Sort Selected Folder - Sorts the favorites in only the selected folder

## Settings menu



- Auto Backup - Setting to determine if the application should automatically make a backup before doing anything to the Edge database (probably a good idea to leave this checked)
- Merge Imports - Setting to determine if imported items are to be merged into the existing list or placed into an automatically generated "import folder".

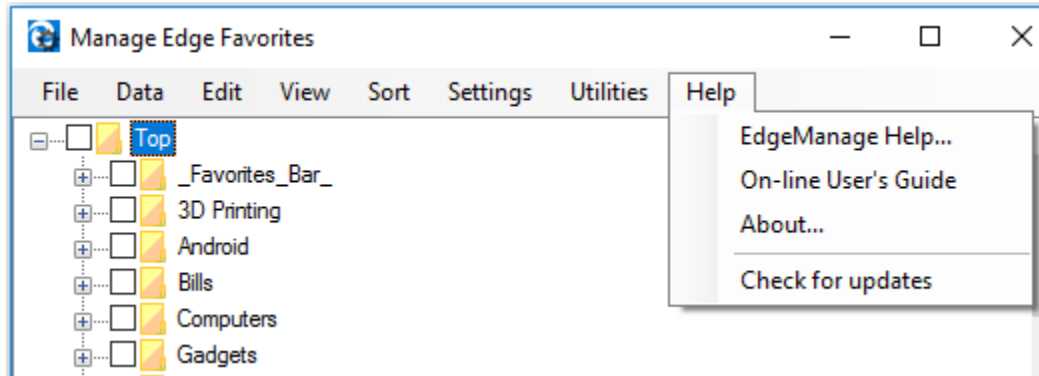
## Utilities menu



- Backup Database - Makes a backup of the Edge database, settings, and files. You will be prompted for a location to store this backup.
- Restore Database - Restores the Edge database, settings, and files from a backup file. You will be prompted for the location of the backup. This action is immediate and does not require that you perform a "Save Changes" action. A restore operation will completely discard all changes made by both Edge and EdgeManage that have occurred since the date of the backup.
- Generate Icons - This will attempt to generate all of the missing favorite icons. Note: This may take 2-3 seconds per favorite to poll the website for the missing favorite icon. This is not an exact science, and the success rate is about 70%.

***Note: Whenever a new version of Edge is released, the structure of the database may change (for example, they may add a new field). So, it is recommended that you use the Restore Database feature only on the same version of Edge that was originally used to create that backup.***

## Help menu



- EdgeManage Help - A very minimal help file
- On-line User's Guide - This web page! *Note: Remember to close the browser window before performing any other functions*
- About - The vanity plate.
- Check for updates - This will allow you to check if there is an update available. If so, you will be prompted to install the newer version

## How to Use

EdgeManage is a stand-alone application that you use to perform imports, exports, sorts, moves, renames, etc of your Edge favorites. A typical EdgeManage "session" looks like this:

1. Close Microsoft Edge
2. Launch EdgeManage - it will automatically load all of your favorites
3. Make whatever changes you like
4. Click "File->Save Changes"
5. Exit EdgeManage
6. Launch Microsoft Edge - all of the changes you made will be visible

You wouldn't normally need to run EdgeManage very often... just whenever you want to perform management functions that are not natively available in Edge

## Behavioral Differences

The real Microsoft Edge will allow you to have more than one folder or favorite with the same name. However, it will not allow a favorite to share the same URL in a folder.

The behavior of EdgeManage is the virtual opposite of the above rules... it will *not* allow duplicate folder or favorite names (within the same folder). And, it *does* allow a favorite to share the same URL.

# Frequently Asked Questions

## I get a message saying that the program doesn't support my version of Windows

EdgeManage only works with Windows 10.0.10586 or higher. If your PC has a lower number, that means that it doesn't have the "November Update". If so, then I'd recommend that you manually install this update.

## Favorites created by EdgeManage don't have associated favorite icons

EdgeManage does not accommodate favorite icons during imports from Internet Explorer. These favorite icons will eventually repopulate on their own after visiting the sites from within Edge. You can use the "Utilities->Generate Icons" menu to attempt to automatically generate all missing favorite icons.

## Is there an update notification system?

No, users are encouraged to use the "Help->Check for updates" menu to see if there is an update available.

## Where are the "configuration settings" files?

The application uses two files for "settings"... The one that is applicable to all users of the application is most likely at: C:\Program Files (x86)\Emmet Gray\EdgeManage\EdgeManage.exe.config. The one that is applicable to just the current user would typically look like: %USERPROFILE%\AppData\Local\Emmet\_Gray\EdgeManage.exe\_Url\_r14zxb2edf0cwclxoxfa1zc1mboj2ojm\2.0.0.0\user.config. Note: the "hash value" and version number may be different, so pick the latest one.

These are just ordinary text files, that you can edit with Notepad.

## Other Related Projects

Take a look at these related projects:

- [Synchronize Edge Favorites](#)
- [Launch Edge Browser](#)
- [Export Edge Favorites](#)
- [View ESE Database](#)

## Downloads/Links

Download the new windows installer file: [SetupEdgeManage.msi](#)

Download the old windows installer file: [SetupEdgeManage.exe](#)

Here are the files if you want to try it out without installing anything:

[EdgeManageProgramFiles.zip](#)

Download the C# Source code for this application: [EdgeManageSrc.zip](#)

Download the program's text as an Excel workbook for translation into other languages:

[EdgeManageTranslate.xlsx](#)