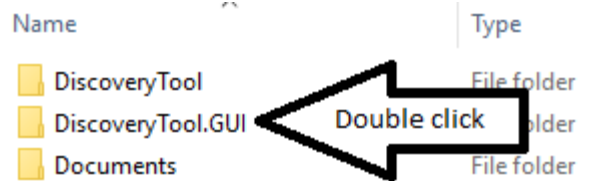
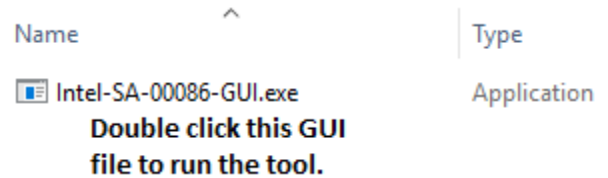


6. The three folders in the SA00086_Windows folder will be shown as displayed on the right.

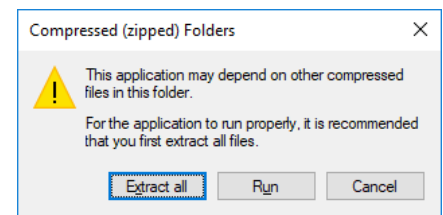
7. Double click the Discovery Tool.GUI folder.



8. Finally, the Intel Discovery Tool is revealed. The name is Intel-SA-00086-GUI.exe. (Don't worry if you can't see the final .exe. The description of Application means that you have the correct file.) Now, double click the file name to start the tool.



9. In the Compressed (zipped) Folders pop up window, click Run. If for any reason you get an error message then repeat these instructions and click Extract all instead.



10. You will have to click Yes on the User Account Control screen that pops up to allow the tool to run.

11. After a short time, the tool's Risk Assessment report will pop up on your screen as shown on the right for my computer.

Since I have an older Intel CPU, I am not at risk as stated in the second line of the report at the right.

If your computer is vulnerable, the fix will be made available by the manufacturer of your computer.

Check your manufacturer's web site for an update to correct the Intel SA-00086 problem.

It may be a while before the fix is available to download and install. Some manufacturers estimated that it would take until February of 2018 to have the fix available.

John M. King, 1/10/2018

References:

<https://www.intel.com/content/www/us/en/support/articles/000025619/software.html>

Lists affected processors and provides links to manufacturers sites related to the problem.

https://www.theregister.co.uk/2017/11/20/intel_flags_firmware_flaws/

Description of the problem and what is at risk.

